

Network file Sharing on SIGLENT Performance Oscilloscopes

April 08, 2024

INTRODUCTION

There are a number of applications for sharing data and files between instruments and computers for data archival and analysis. SIGLENT's performance oscilloscopes provide a set of tools for connecting data locations over the network.

These instruments provide the ability to either share their local files (SERVER) or to access remote drives (CLIENT) via the LAN network. Here are the available modes:

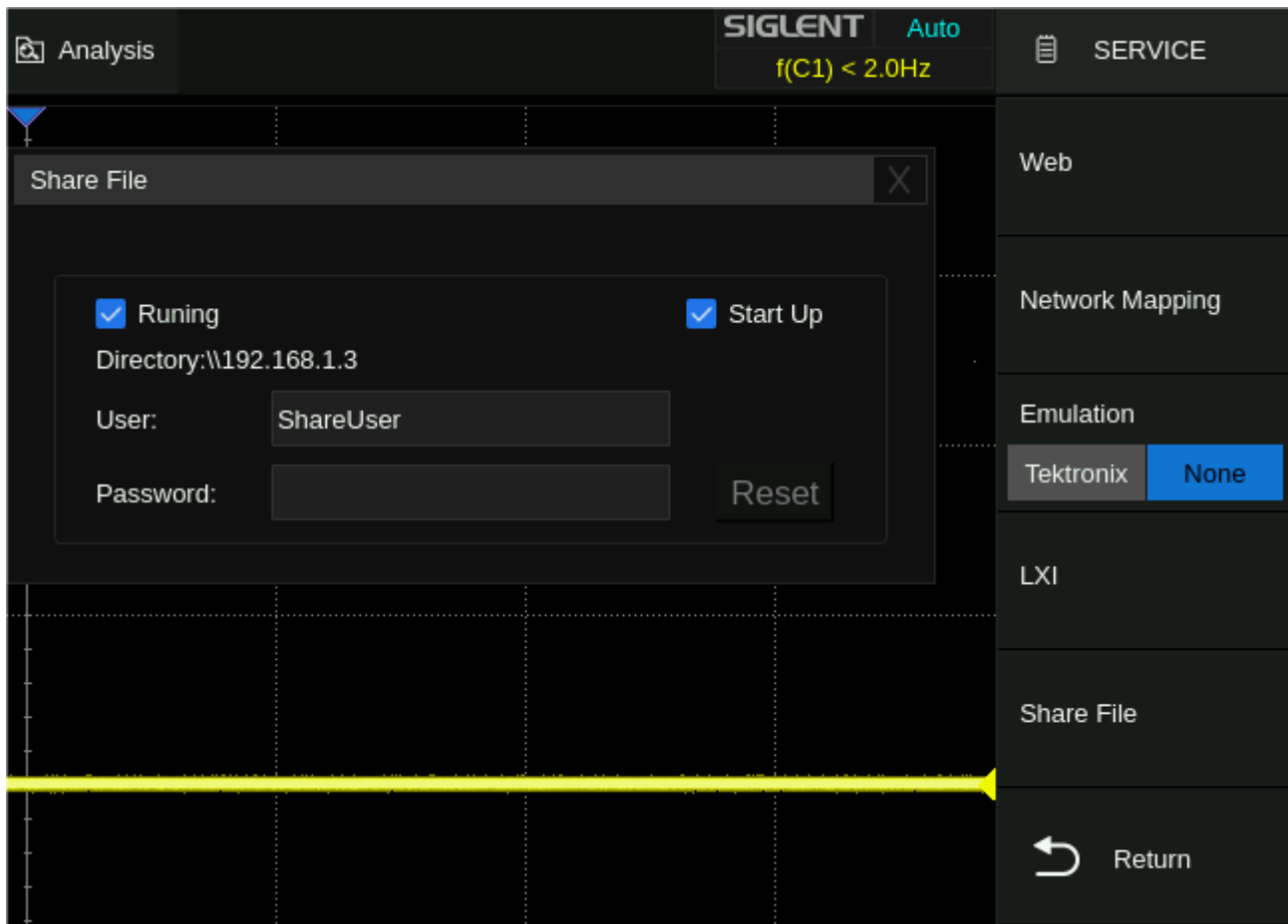
Instrument Series	Server Mode	Client Mode
SDS800X HD	YES	YES
SDS1000X HD	YES	YES
SDS2000X HD		YES
SDS3000X HD	YES	YES
SDS6000A	YES	YES
SDS7000A	YES	YES

Here are the instructions for setting up the modes within each instrument.

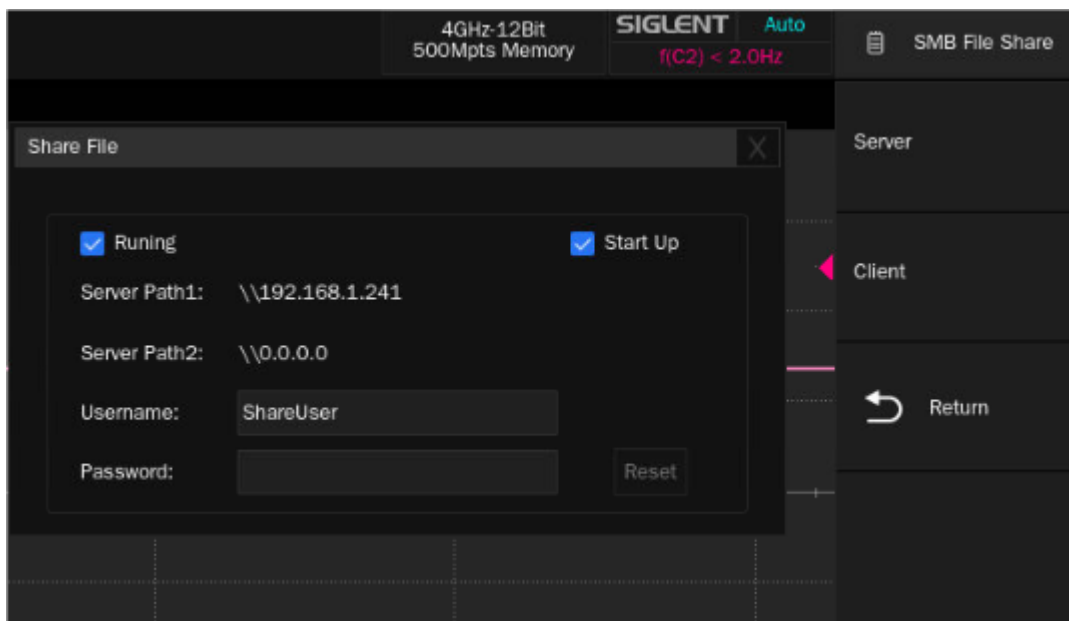
For SERVER, Set the IO window as follows:

In the SDS6000A:

This is the Utility/Service/Share File menu



On the SDS7000A, it is in: UTILITY / SERVICE / SMB FILE SHARE / SERVER

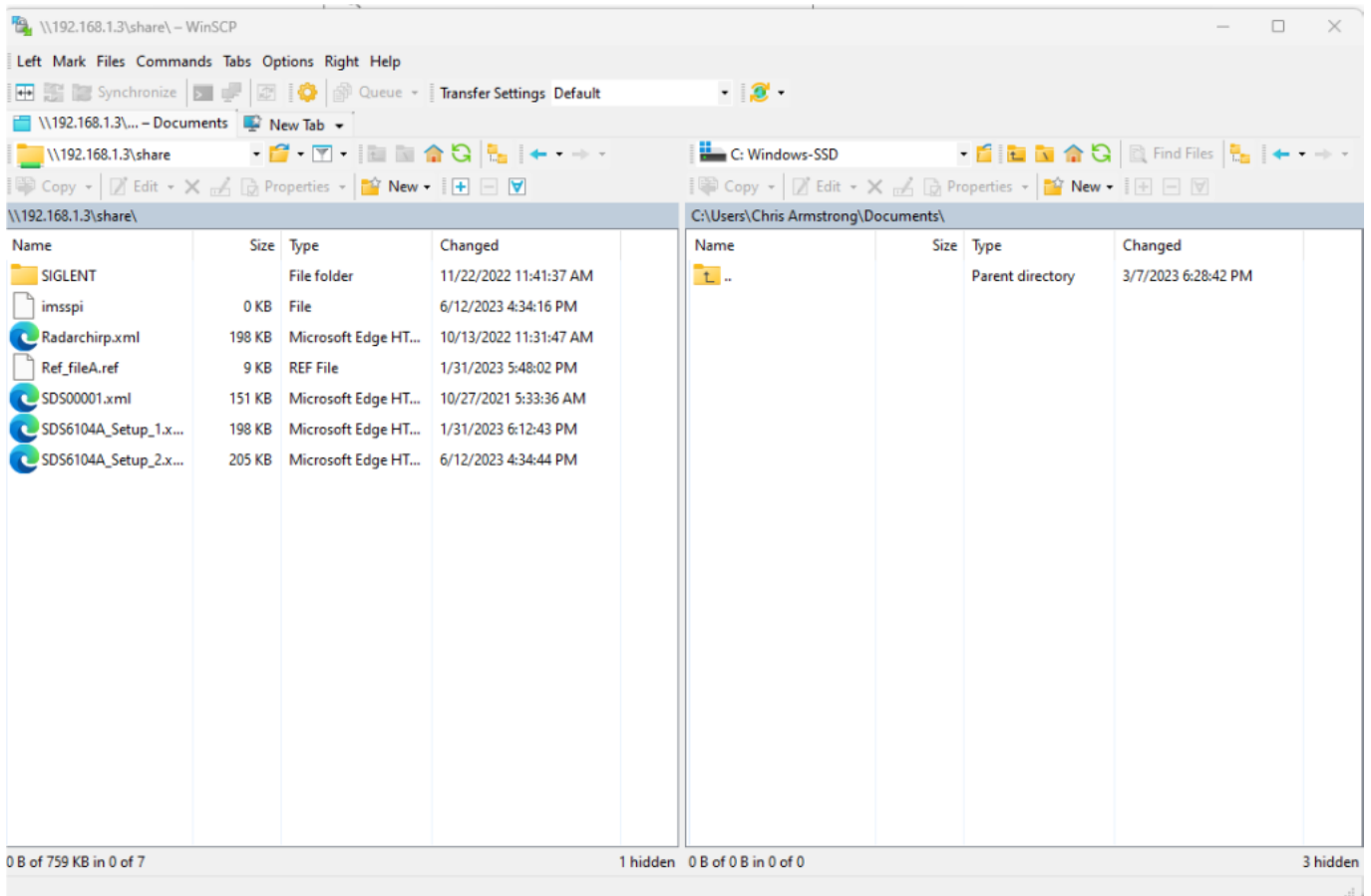


Leave the default user and no password for easy access.

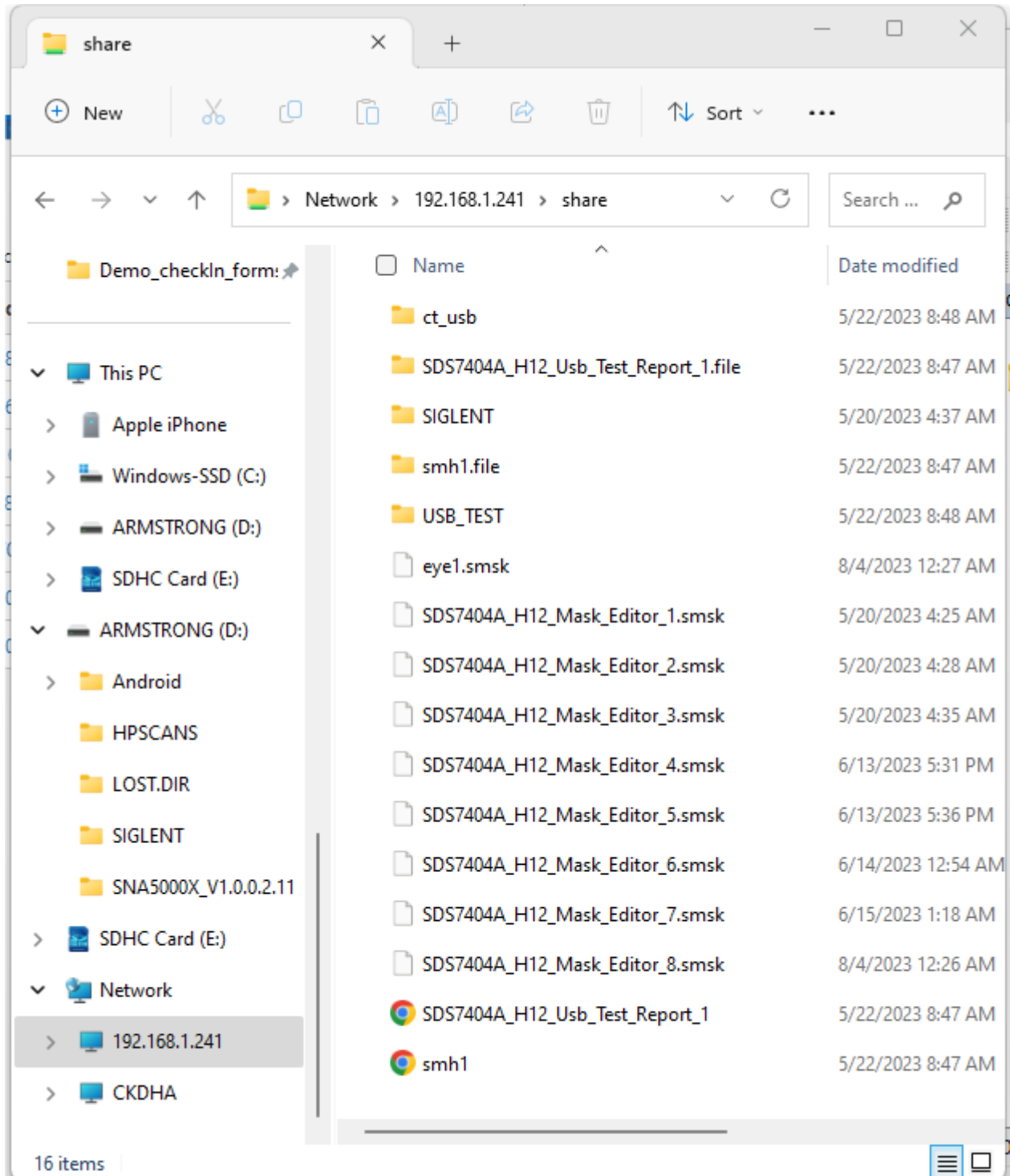
When activated with the blue checks you can then access the folder in explorer or thru a file sharing tool like this:

Drive is: \\<IP_ADDRESS>\share

Like this: \\192.168.1.3\share\

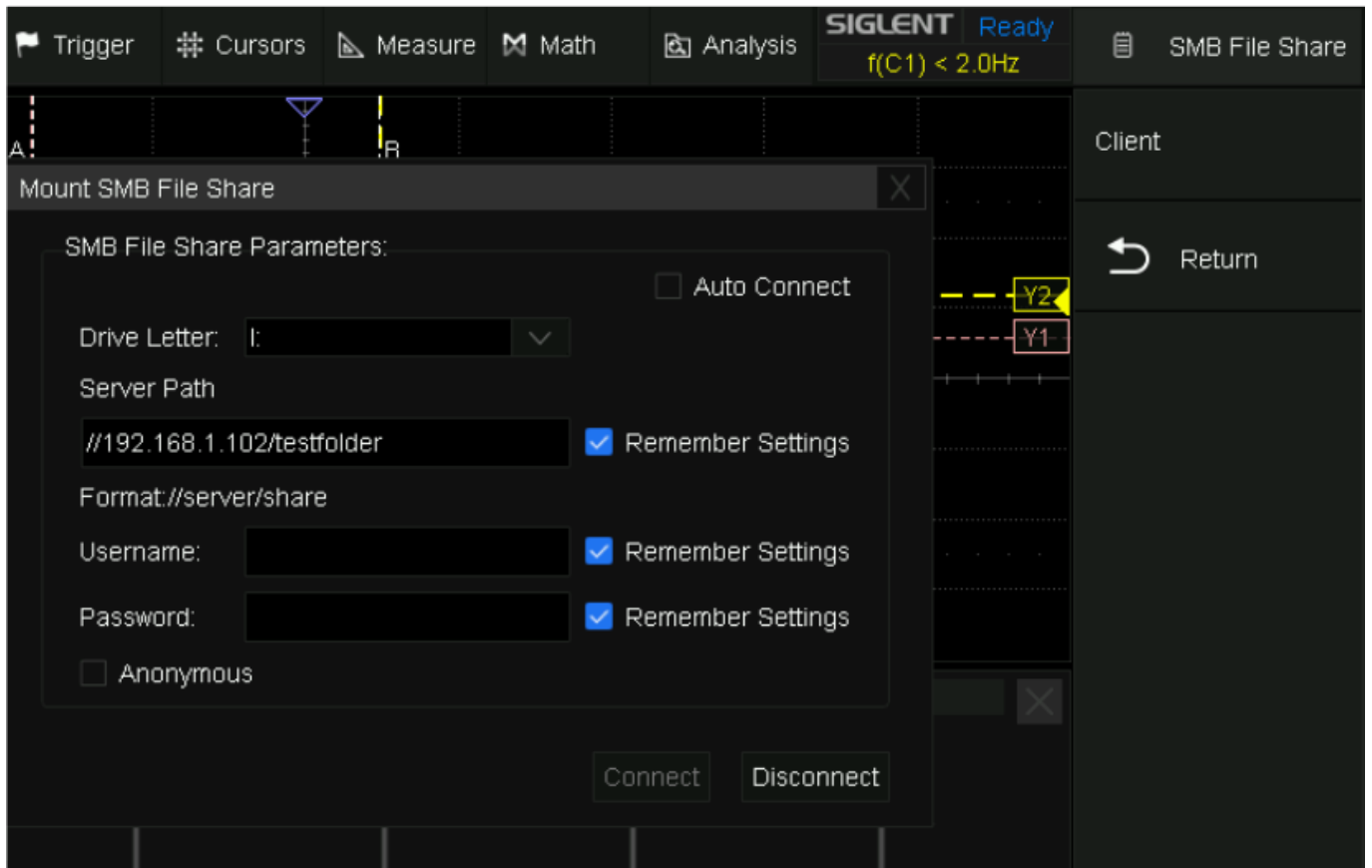


Or directly in Explorer:

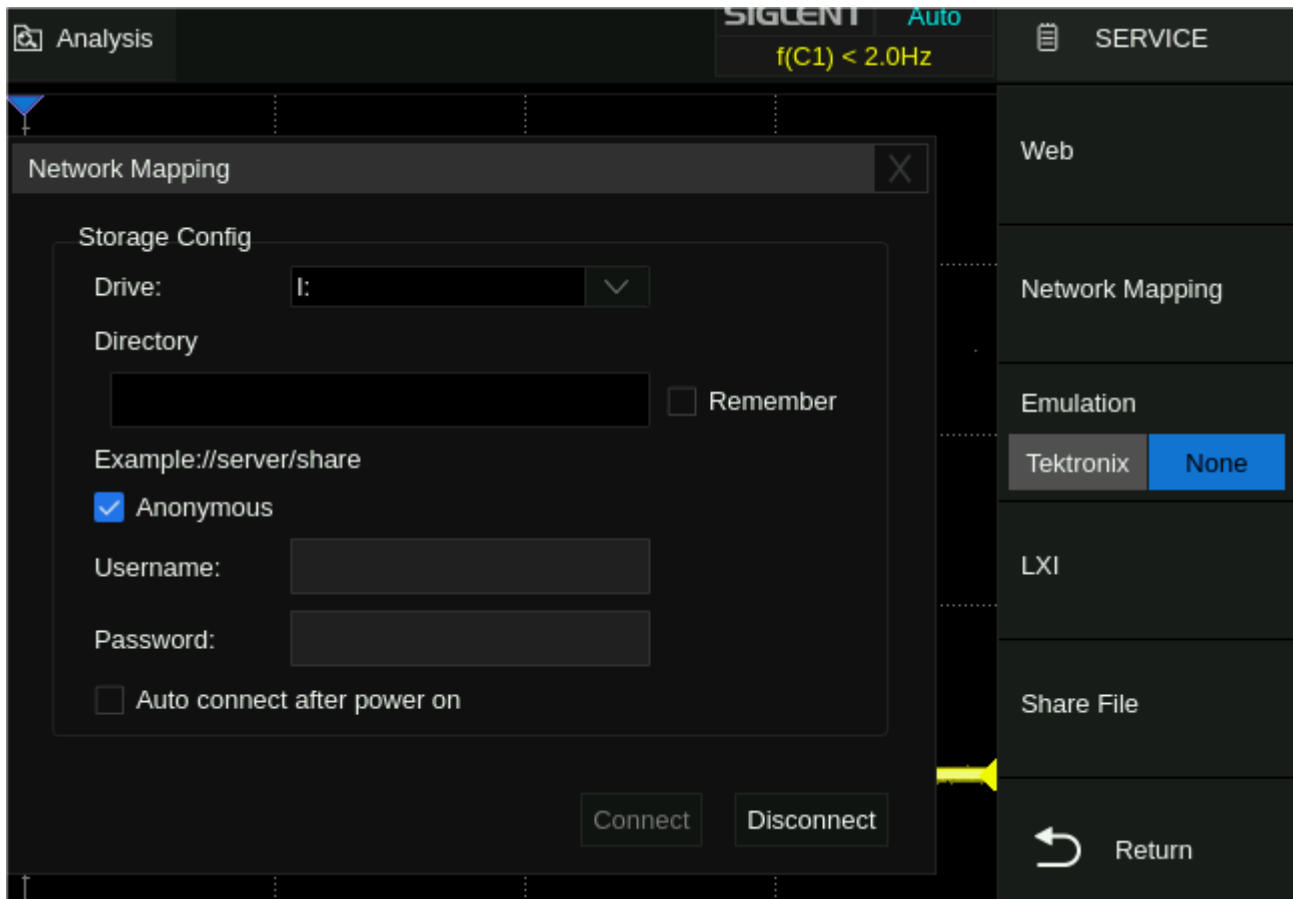


On the SDS2000X HD, SDS6000A, or SDS7000A you may also mount a drive from your PC. This is called SMB File Share CLIENT mode.

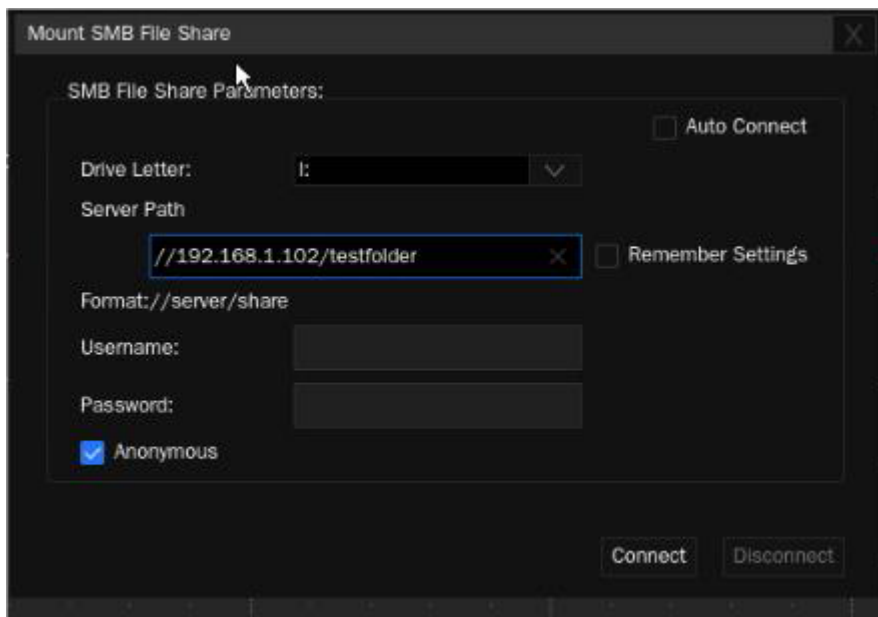
The UI looks like this on the SDS2000X HD. It is under SMB FILE SHARE/ CLIENT:



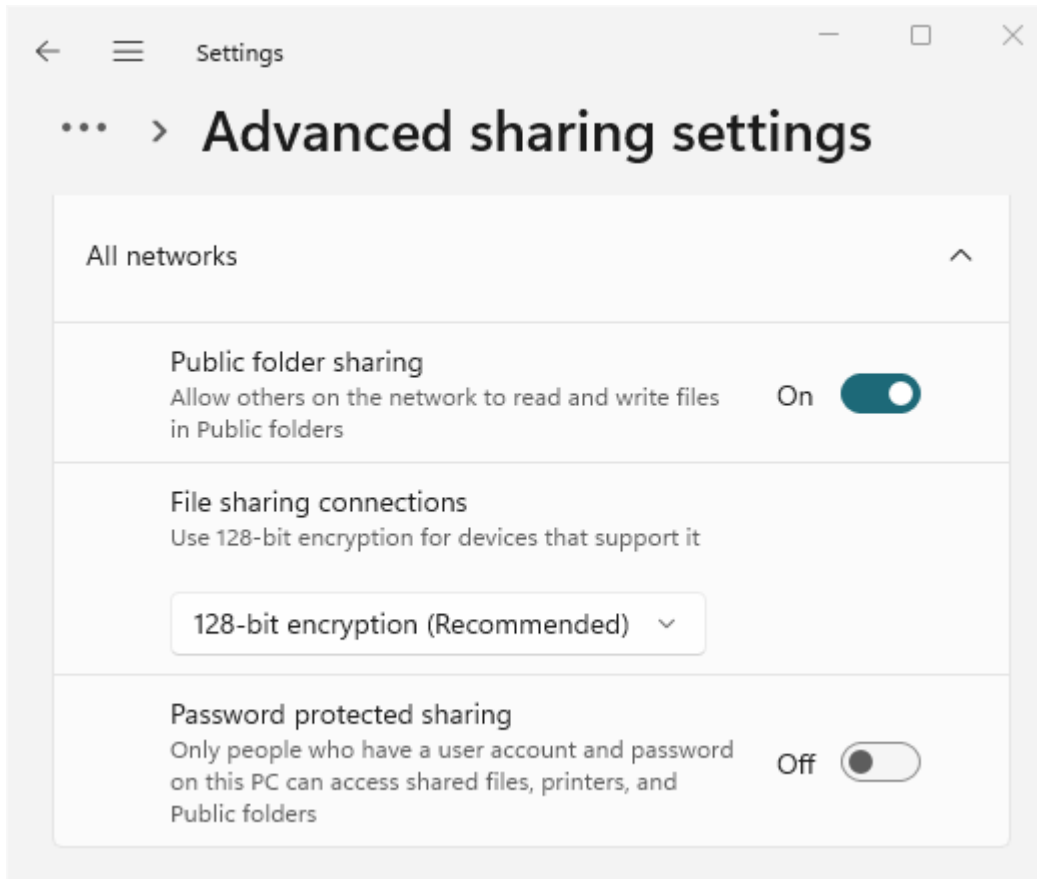
On the SDS6000A it looks like this and is found in SERVICE / NETWORK MAPPING:



On the SDS7000A it is under SMB FILE SHARE/ CLIENT:

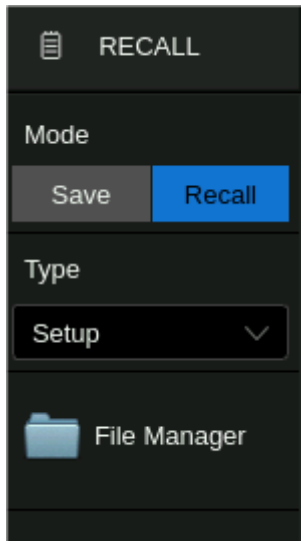


To share with a folder on Windows, you would likely need to turn off firewall protection, share the folder with read/write permission for EVERYONE, and turn off the Password protection sharing like this:



Once that connects, you can access files on the PC from your Oscilloscope.

You can always find the File Manager on your oscilloscope by going to: UTILITY/ SAVE/RECALL / File Manager:





North American Headquarters

SIGLENT Technologies America, Inc
6557 Cochran Rd Solon, Ohio 44139
Tel: 440-398-5800
Toll Free:877-515-5551
Fax: 440-399-1211
info@siglent.com
www.siglentamerica.com/

European Sales Offices

SIGLENT TECHNOLOGIES EUROPE GmbH
Staetzlinger Str. 70
86165 Augsburg, Germany
Tel: +49(0)-821-666 0 111 0
Fax: +49(0)-821-666 0 111 22
info-eu@siglent.com
www.siglenteu.com

Asian Headquarters

SIGLENT TECHNOLOGIES CO., LTD.
Blog No.4 & No.5, Antongda Industrial Zone,
3rd Liuxian Road, Bao'an District,
Shenzhen, 518101, China.
Tel:+ 86 755 3661 5186
Fax:+ 86 755 3359 1582
sales@siglent.com
www.siglent.com/ens