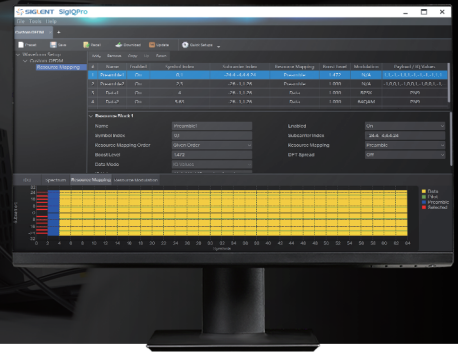


# SigIQPro

## PC Waveform Signal Generation



## SIMPLE AND FAST SIGNAL GENERATION

SigIQPro is a flexible PC-based signal generation software that takes signal generation to a whole new level. SIGLENT instruments and SigIQPro signal generation software integrate simulation, design and test to easily meet the needs of users at all stages of design, R&D, and production.



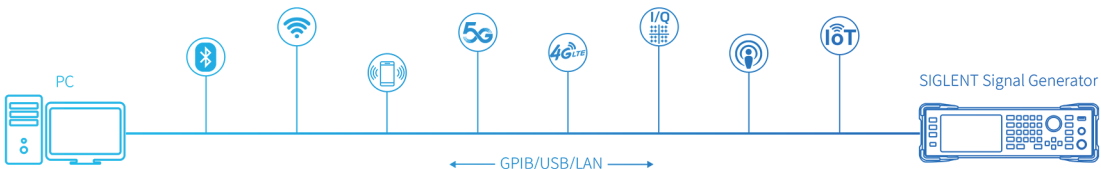
**TRY BEFORE YOU BUY!**

30 free trials for each feature

Deep insight and efficiently configure fully parameterized signal

Tree view intuitively navigates signal structure

Visualization of simulation results of generated signals

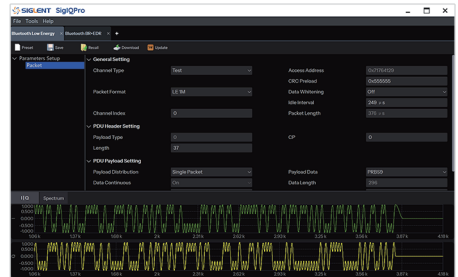




# A COMPREHENSIVE TESTING SOLUTION

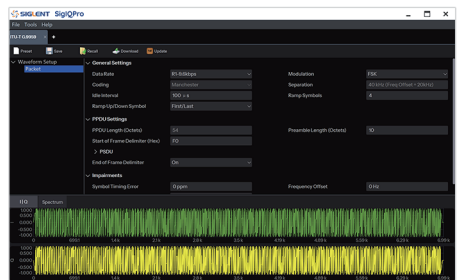
## Bluetooth

- Create signals for BR, EDR, LE specifications
- Support 2 Ms/s symbol rate for higher data rate
- Basic and enhanced data rate modulated data streams
- Fully-coded Bluetooth packets with 2-DHX, 2-EVx, 3-DHX, and 3-EVx packet types



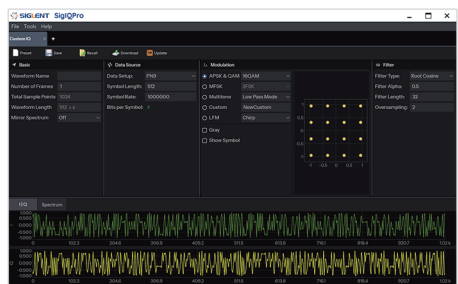
## IoT (Internet of Things)

- A principally outdoor, low data rate wireless network
- Typically employ mesh or peer-to-peer multi-hop technology to communicate with an access point
- Create signals for IEEE 802.15.4 SUN FSK and for IEEE 802.15.4 SUN OFDM specifications
- Create signals for IEEE 802.15.4 O-QPSK / BPSK ZigBee and ITU-T G.9959 FSK / GFSK Z-Wave specifications



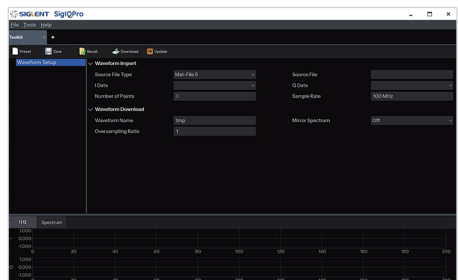
## Custom Modulation (Custom IQ and Custom OFDM)

- Custom IQ and Custom OFDM, including Digital modulation, Custom modulation, Multitone and LFM sweep
- Modulation Format:  
2ASK, PR-ASK, 2FSK, 4FSK to 16FSK, MSK, 8QAM, 16QAM to 4096QAM, BPSK, OQPSK, QPSK, 8PSK, DBPSK, DQPSK, D8PSK, PI/4-DQPSK, PI/8-D8PSK, 16APSK, 32APSK



## Toolkit

- A file conversion tool, compatible with conversion of various data formats
- Export waveform files (\*.arb), project file (\*.project) or state files (\*.state)
- Import SIGLENT encrypted waveforms (\*.arb) or user defined waveforms (\*.txt/.csv/.dat, \*.mat, \*.project, \*.state, etc)



SIGLENT Technologies Germany GmbH

Add: Stätzlinger Str. 70 86165 Augsburg Germany  
 Email: info-eu@siglent.com  
 Date and version number: November 2023 - EN01A

Phone: +49 (0)821 6660 111-0  
 Website: www.siglenteu.com

Fax: +49(0)-821-666 0 111 22



Facebook SiglentTech