

## Higher Bandwidth SDS7000A Series Releases 6GHz Model

November 12, 2024

On November 12, 2024, SIGLENT launches its 6GHz bandwidth high-resolution oscilloscope with 12-bit ADC, 1 Gpts memory depth, and protocol compliance tests like MIPI D-PHY, DDR. This product further enriches SIGLENT's high-resolution and high-sampling rate digital oscilloscope product line, which can be widely used in embedded design, automotive electronics and other related fields.

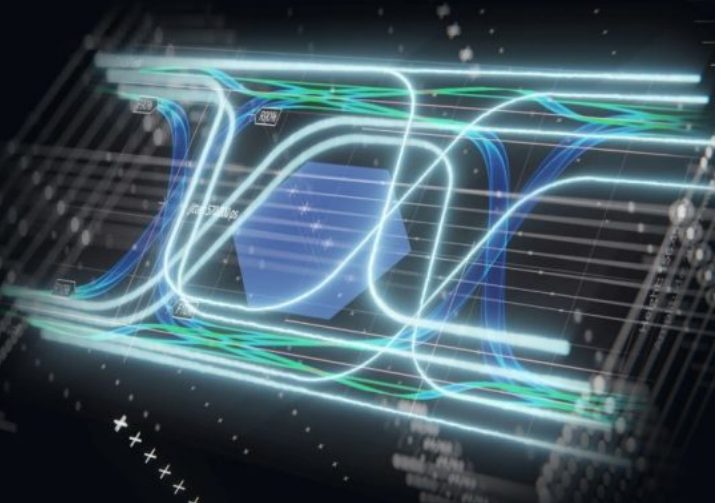


### Ensuring signal quality

The SDS7604A H12 combines low noise, high DC gain accuracy and channel isolation. The SDS7000A has a noise of only 300  $\mu\text{Vrms}$  at 6 GHz bandwidth. The DC gain accuracy of all SIGLENT's high-resolution oscilloscopes is 1.5% at lower ranges, and 0.5% at ranges  $\geq 5 \text{ mV/div}$ . The SDS7000A series offers CH to CH isolation up to 60 dB. Up to now, SIGLENT offers high resolution oscilloscopes from 70 MHz to 6 GHz, with extensive experience and excellent performance in solving signal integrity problems.

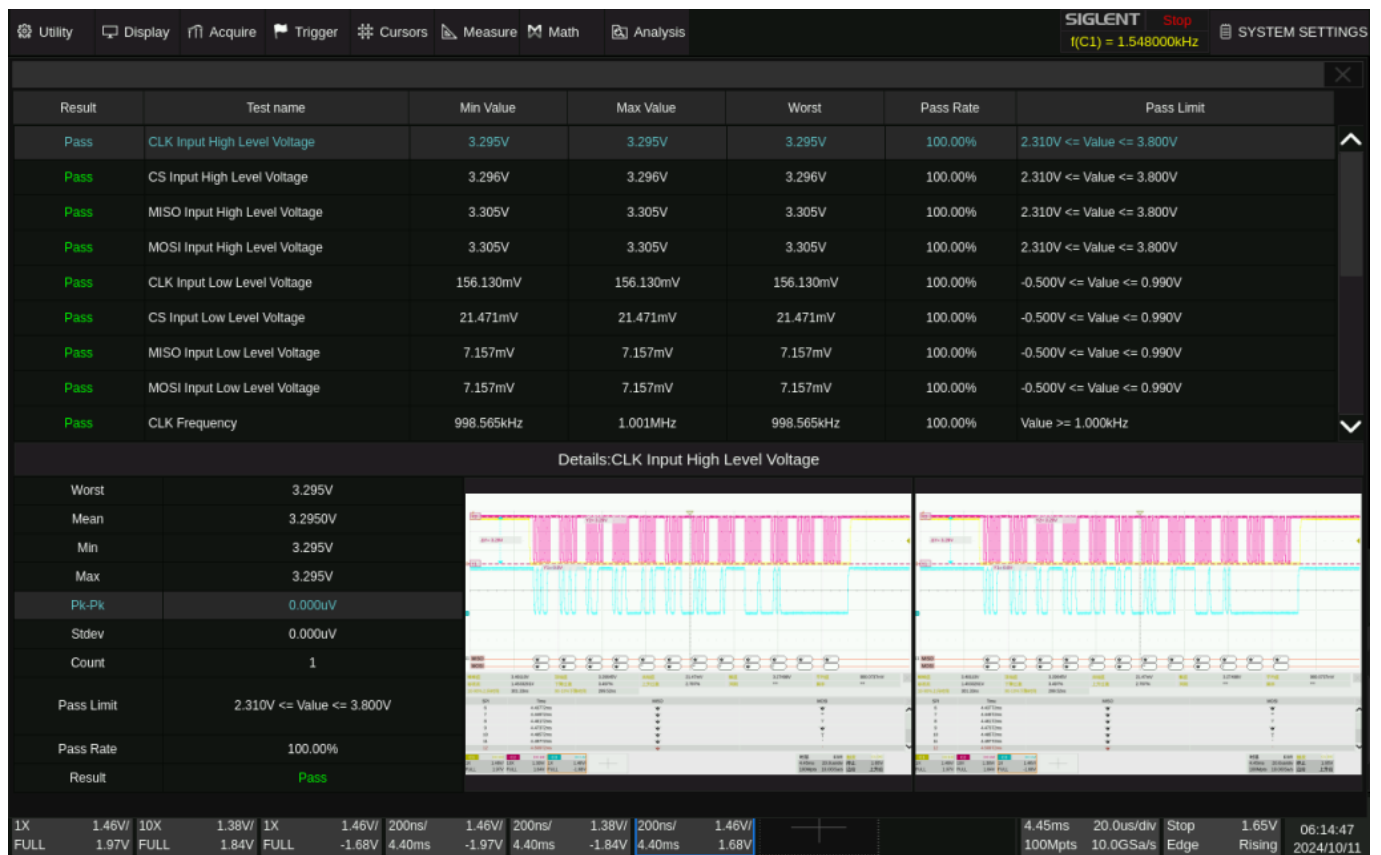
### Used for high-speed signal testing

Test signal quality and determine transmission reliability.  
Ensure accurate data transmission to improve product quality and stability.



## Serial Protocol Analysis

Oscilloscopes play an integral role in serial protocol analysis. Using an oscilloscope, serial signals can be accurately captured and displayed in real time, and specific data can be captured using trigger functions. It can decode protocols, convert waveforms into easy-to-understand content, and analyze protocol parameters. In troubleshooting, it can detect abnormal signals and analyze noise. It can also assess signal integrity, provide basis for performance optimization, and help guarantee the accuracy and reliability of serial communication. SIGLENT provides automated serial protocol analysis tools. One-button operation eliminates complicated operations and high testing technology barriers, making tests more efficient.



## More protocol compliance analysis

The SDS7000A supports various protocol compliance tests such as MIPI D-PHY, DDR2, Industrial Ethernet, Automotive Ethernet, USB2.0. These compliance test analysis functions can help engineers conduct electrical performance and functional tests before mass production to ensure product quality and reliability. SIGLENT's compliance analysis solutions can perform multiple tests and guide users through the connections. The SDS7000A can be set automatically for each test. It can display detailed information of each test and generate HTML or XML test reports.





### **North American Headquarters**

SIGLENT Technologies America, Inc  
6557 Cochran Rd Solon, Ohio 44139  
Tel: 440-398-5800  
Toll Free: 877-515-5551  
Fax: 440-399-1211  
[info@siglent.com](mailto:info@siglent.com)  
[www.siglentamerica.com/](http://www.siglentamerica.com/)

### **European Sales Offices**

SIGLENT TECHNOLOGIES EUROPE GmbH  
Staetzlinger Str. 70  
86165 Augsburg, Germany  
Tel: +49(0)-821-666 0 111 0  
Fax: +49(0)-821-666 0 111 22  
[info-eu@siglent.com](mailto:info-eu@siglent.com)  
[www.siglenteu.com](http://www.siglenteu.com)

### **Asian Headquarters**

SIGLENT TECHNOLOGIES CO., LTD.  
Blog No.4 & No.5, Antongda Industrial Zone,  
3rd Liuxian Road, Bao'an District,  
Shenzhen, 518101, China.  
Tel: +86 755 3661 5186  
Fax: +86 755 3359 1582  
[sales@siglent.com](mailto:sales@siglent.com)  
[www.siglent.com/ens](http://www.siglent.com/ens)