

EasyDMM First Use

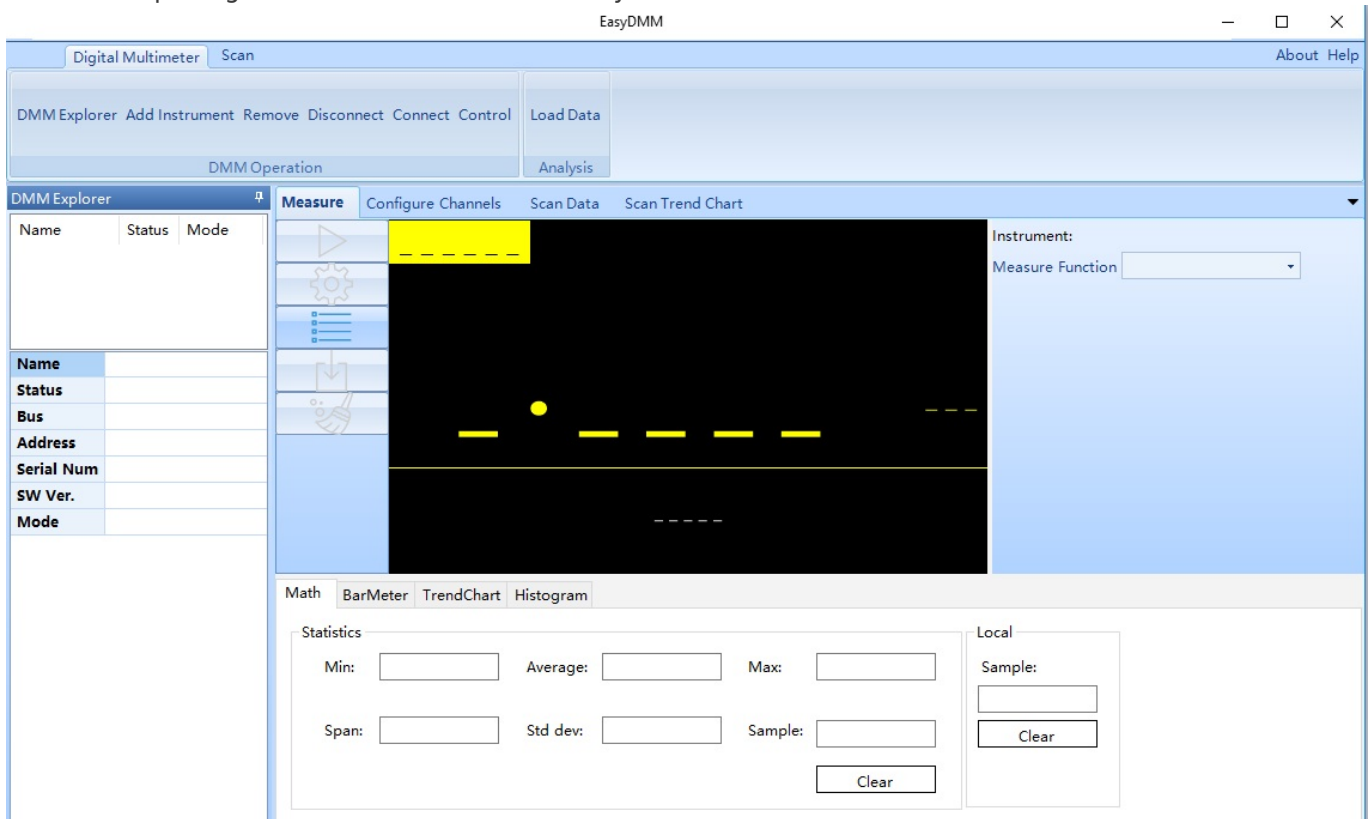
August 27, 2019

SIGLENTs EasyDMM software provides easy instrument control and data collection.

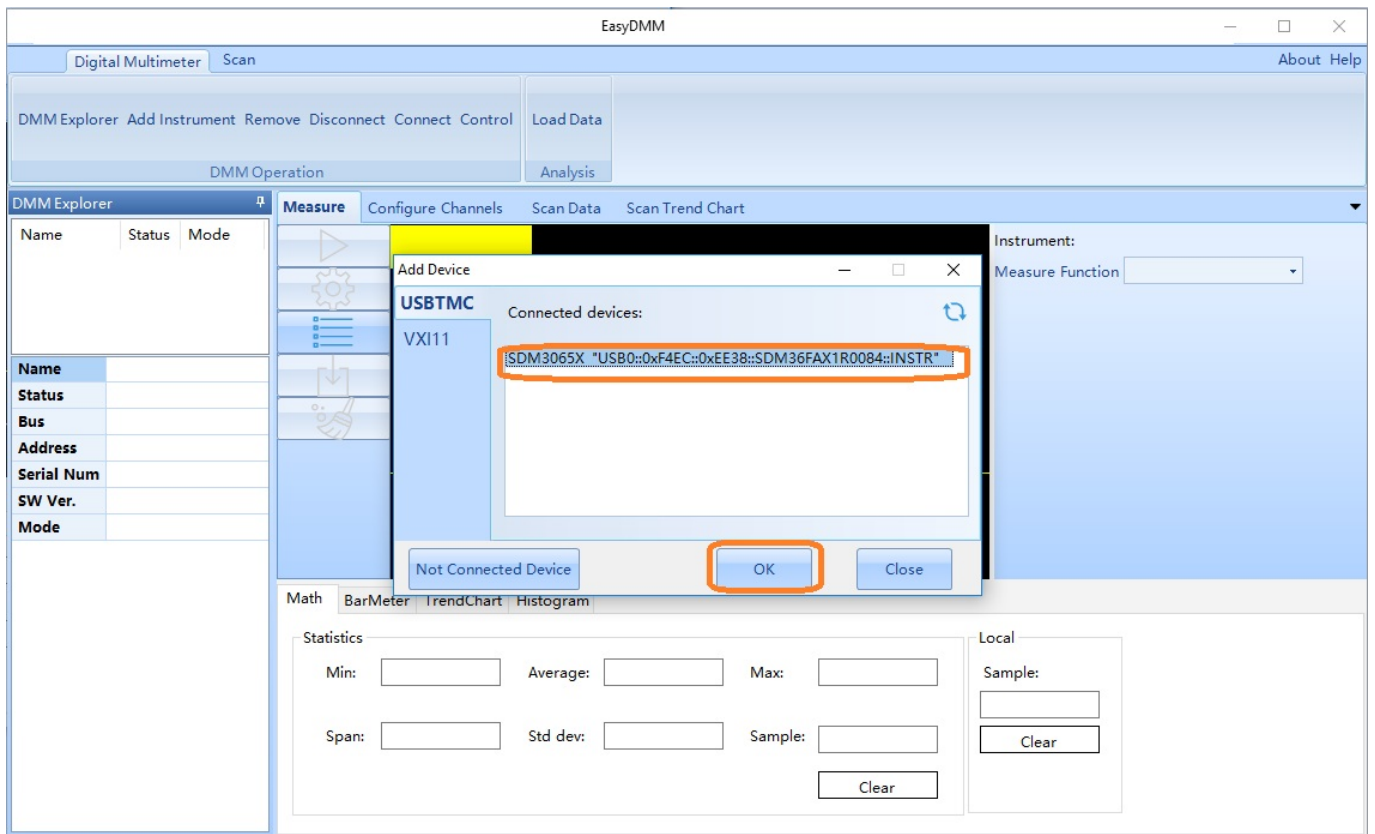
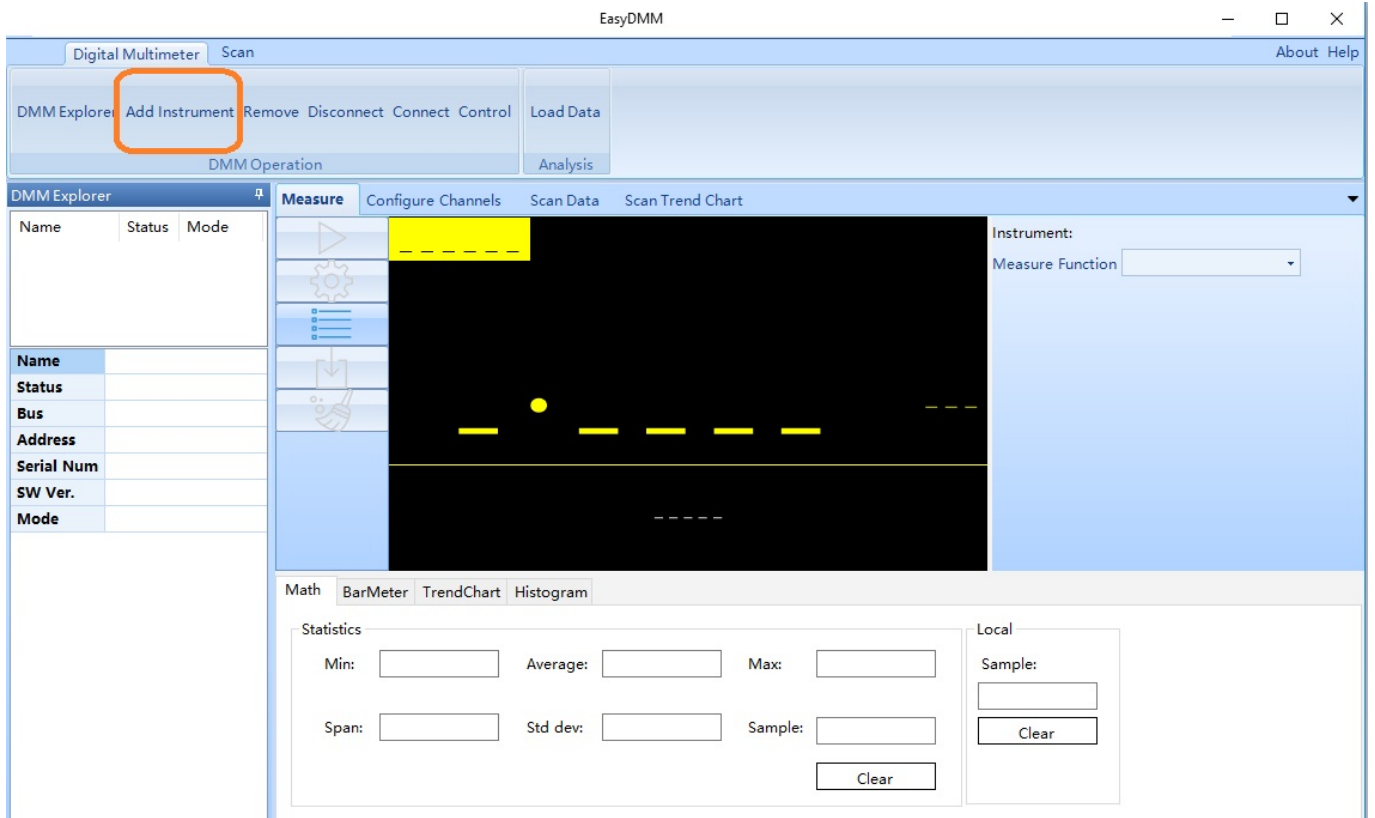
In this note, we will show how to configure EasyDMM for the first time.

1. Download and install EasyDMM. You can find the download instructions and files here: [DMM Software](#)
2. Connect the SDM to the controlling computer or network. The SDMs have USB and LAN connections. In this note, we are using a USB connection
3. Open EasyDMM by clicking on the desktop icon or running the executable from the start menu.

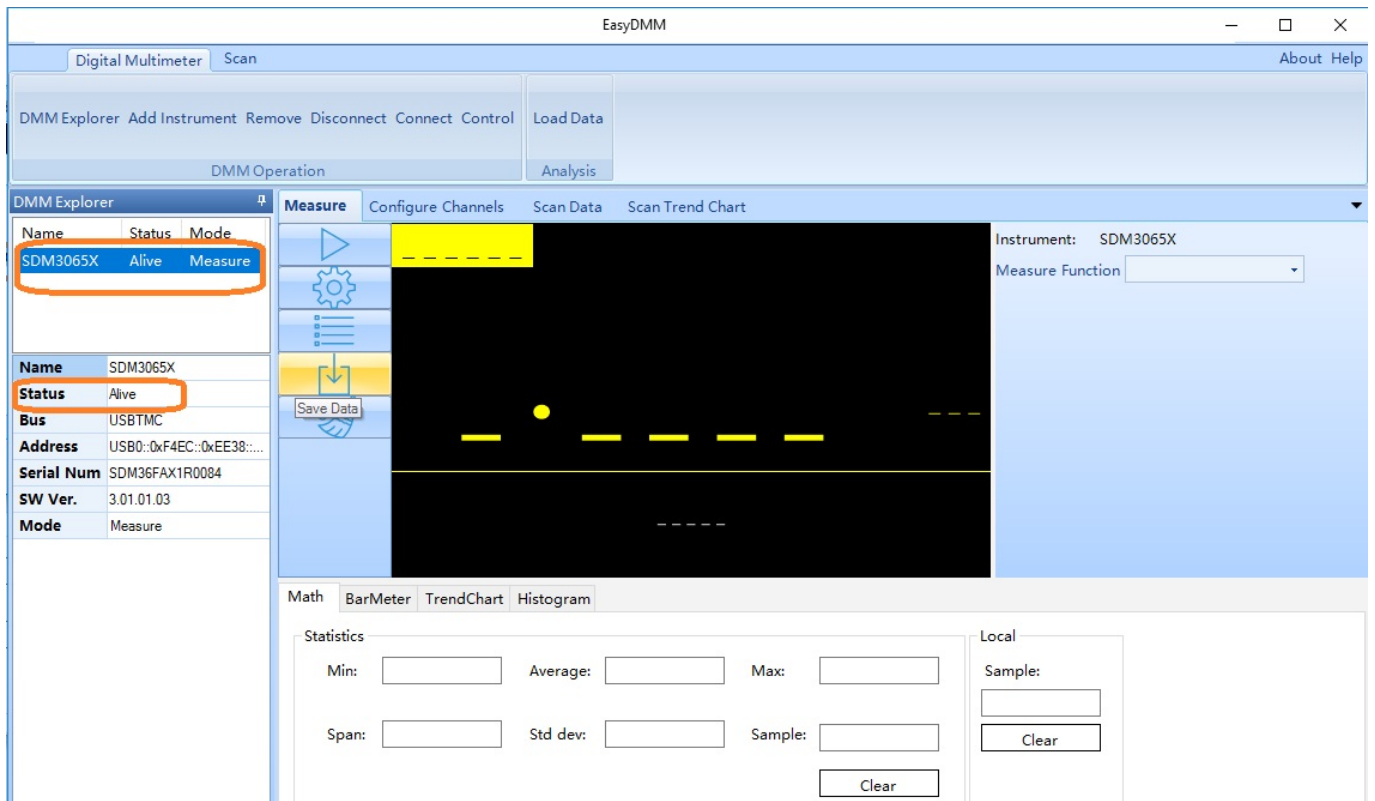
The initial opening screen will show this basic layout:



4. Now, click on Add Instrument, select the USB device you wish to control (USBTMC as shown), and click OK:

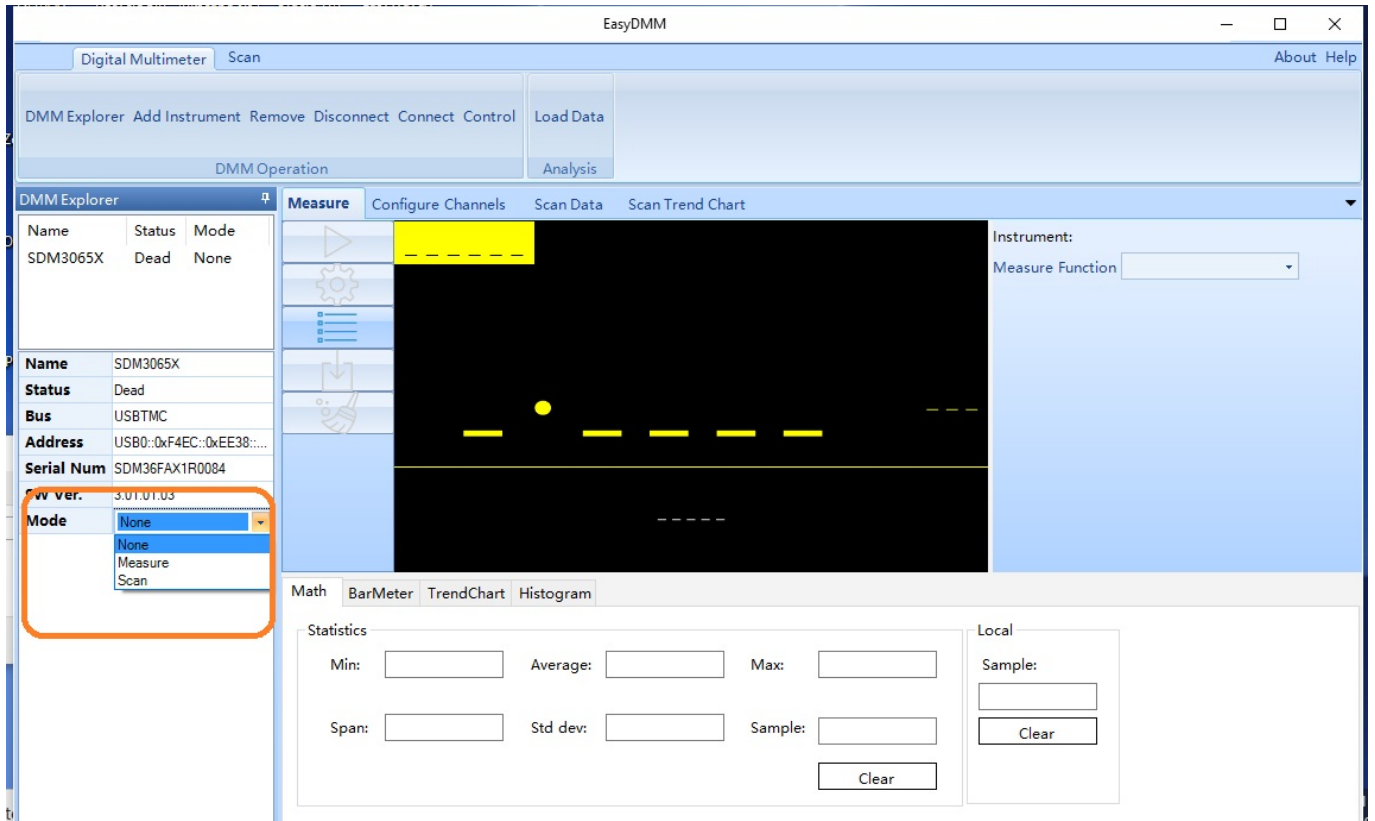


It's ALIVE!!!!

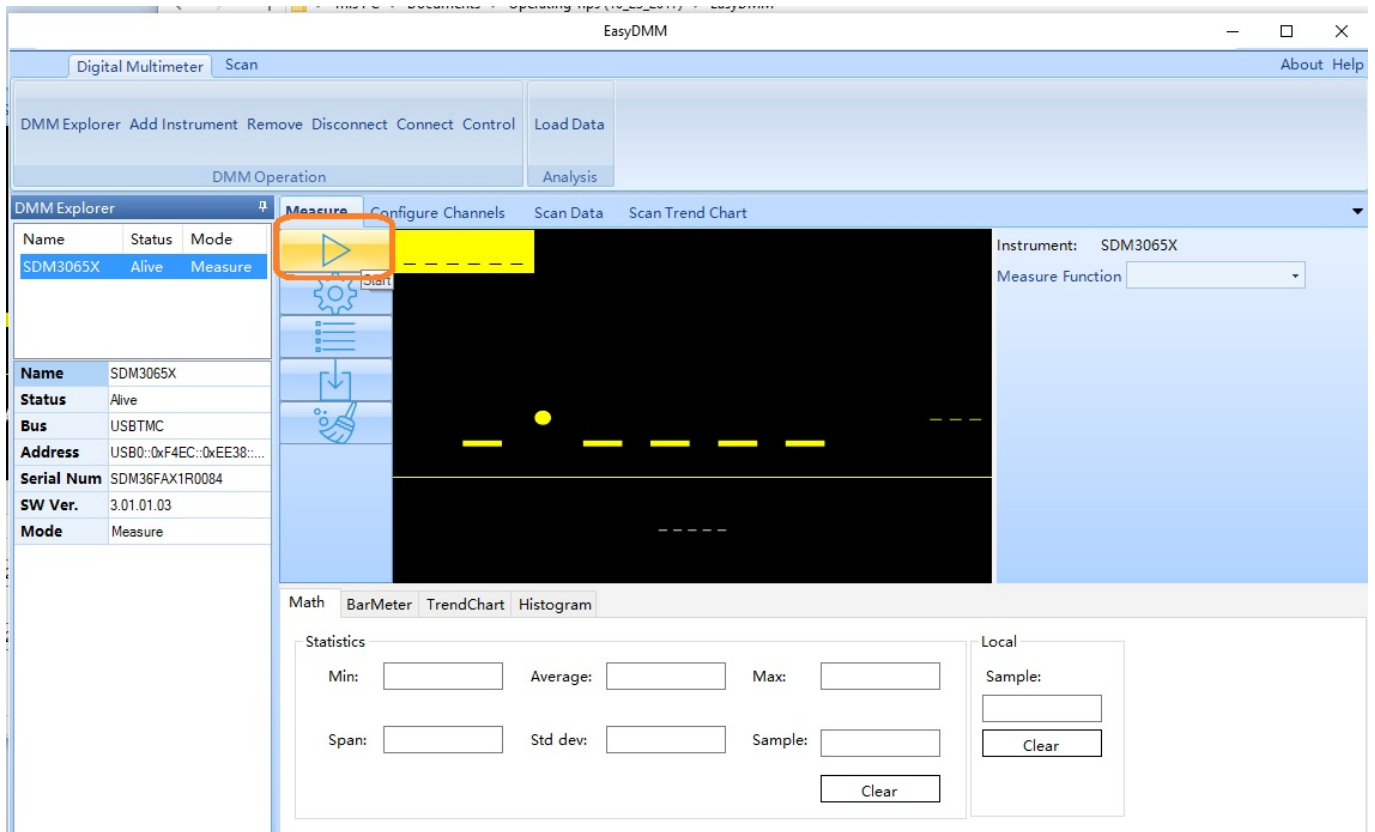


5. Set Mode to Measure:

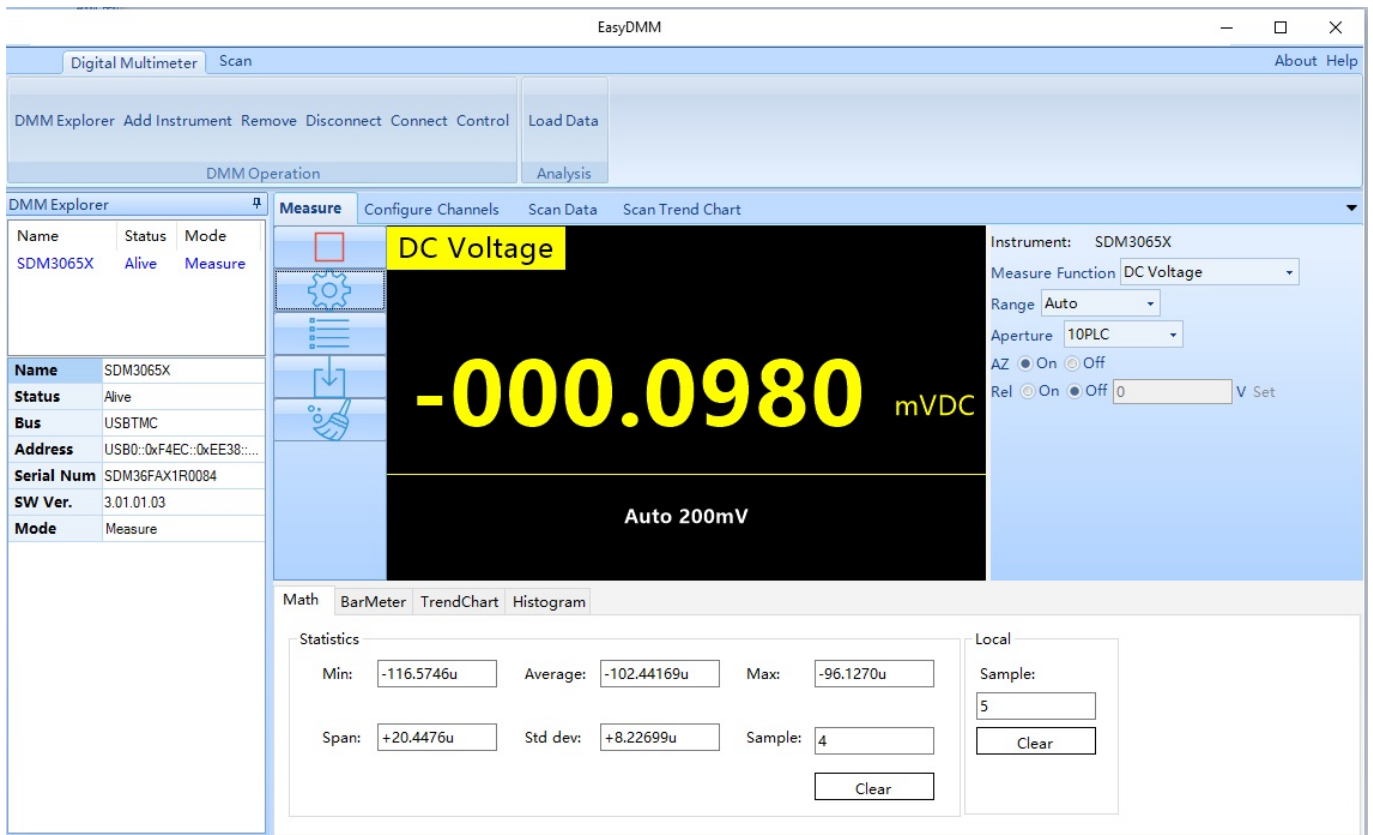
6.



To connect and receive measurements from the instrument, you can click on the “run” button:



This will update the data on the display:



From here, you can adjust the measurement type:

The screenshot shows the EasyDMM software interface. The main display area shows a DC Voltage measurement of **-000.1295 mVDC** with an auto range of 200mV. A dropdown menu is open, showing the 'Measure Function' set to 'DC Voltage' and a list of other measurement options including DC Current, AC Voltage, AC Current, 2 Wire Resistance, 4 Wire Resistance, Capacitance, and Frequency.

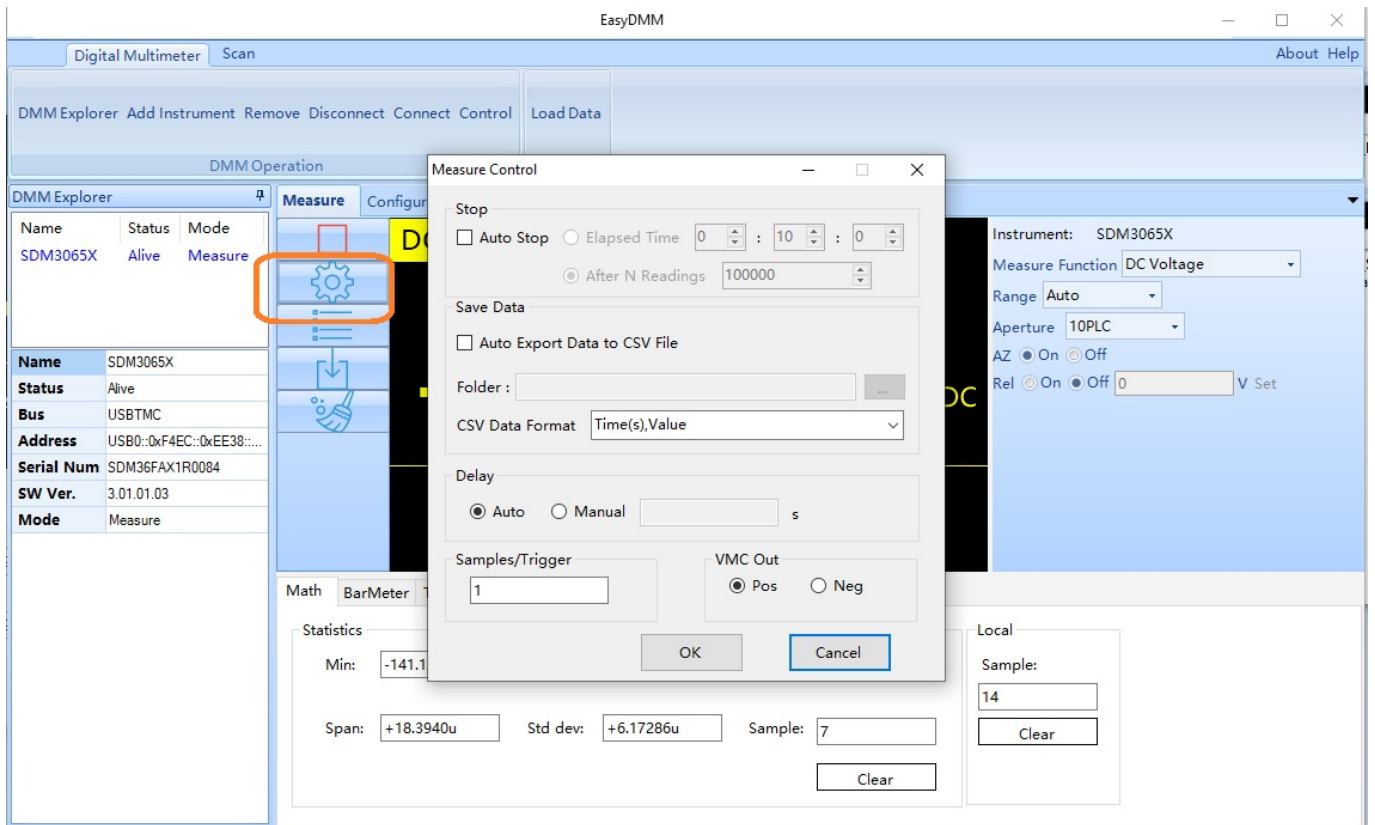
Name	Status	Mode
SDM3065X	Alive	Measure

Name	SDM3065X
Status	Alive
Bus	USBTMC
Address	USB0::0xF4EC::0xEE38:...
Serial Num	SDM36FAX1R0084
SW Ver.	3.01.01.03
Mode	Measure

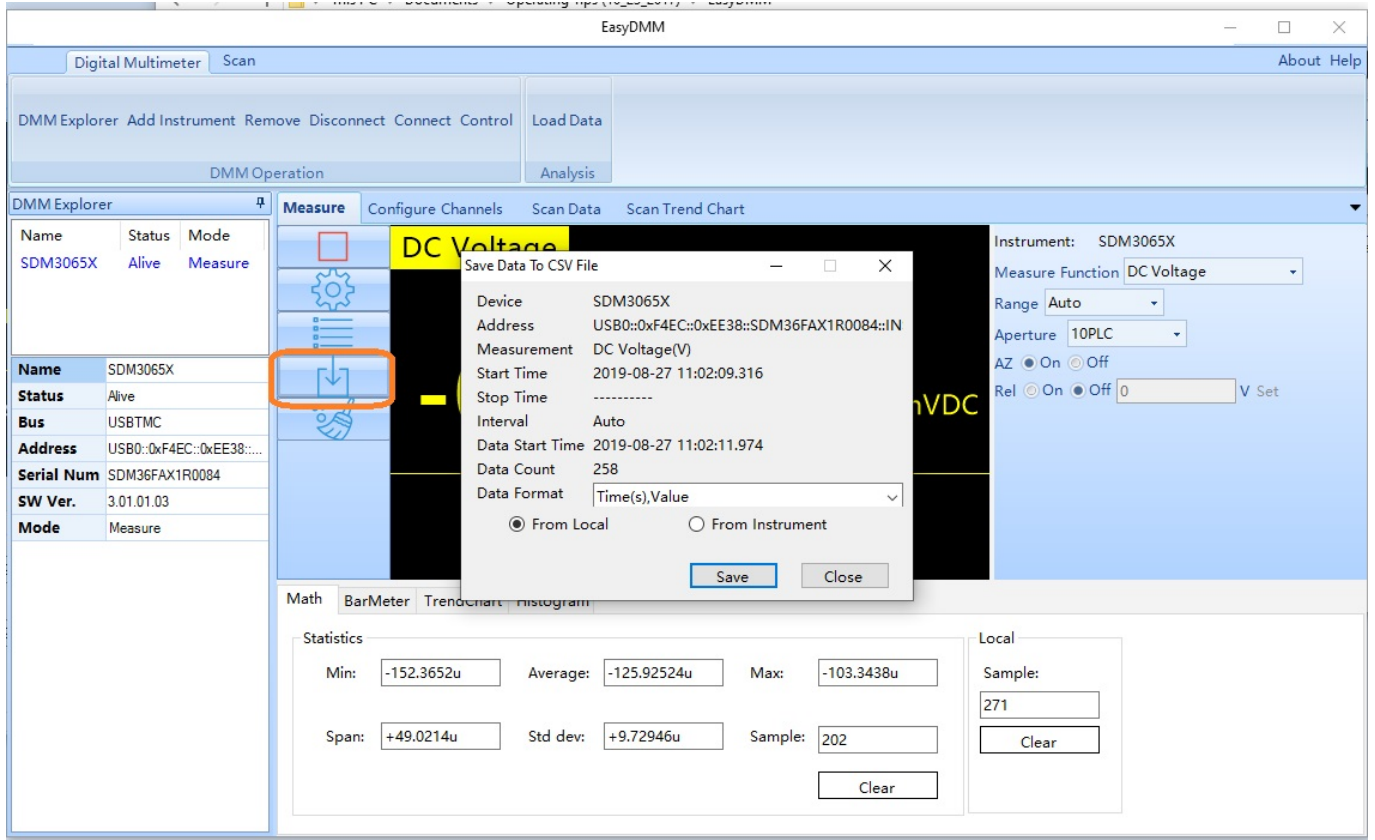
Statistics		
Min:	-152.3652u	Average: -126.01151u
Max:	-101.6129u	
Span:	+50.7523u	Std dev: +9.44880u
		Sample: 292

Local	
Sample:	14
Clear	

View Data:



Save Data:



If you have an SDM3055 or SDM3065X with Scan Card (-SC part numbers), there is also a nice note on scanning here: [Configure EasyDMM Scanning](#)



North American Headquarters

SIGLENT Technologies America, Inc
6557 Cochran Rd Solon, Ohio 44139
Tel: 440-398-5800
Toll Free: 877-515-5551
Fax: 440-399-1211
info@siglent.com
www.siglentamerica.com/

European Sales Offices

SIGLENT TECHNOLOGIES EUROPE GmbH
Staetzlinger Str. 70
86165 Augsburg, Germany
Tel: +49(0)-821-666 0 111 0
Fax: +49(0)-821-666 0 111 22
info-eu@siglent.com
www.siglenteu.com

Asian Headquarters

SIGLENT TECHNOLOGIES CO., LTD.
Blog No.4 & No.5, Antongda Industrial Zone,
3rd Liuxian Road, Bao'an District,
Shenzhen, 518101, China.
Tel: + 86 755 3661 5186
Fax: + 86 755 3359 1582
sales@siglent.com
www.siglent.com/ens