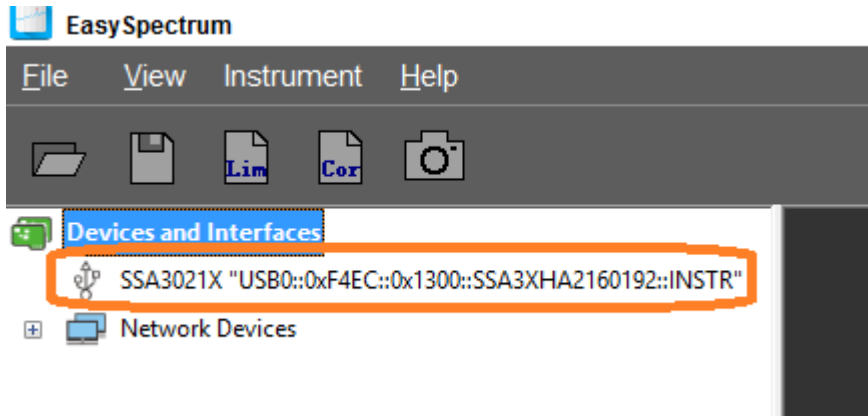


View two limit lines using EasySpectrum

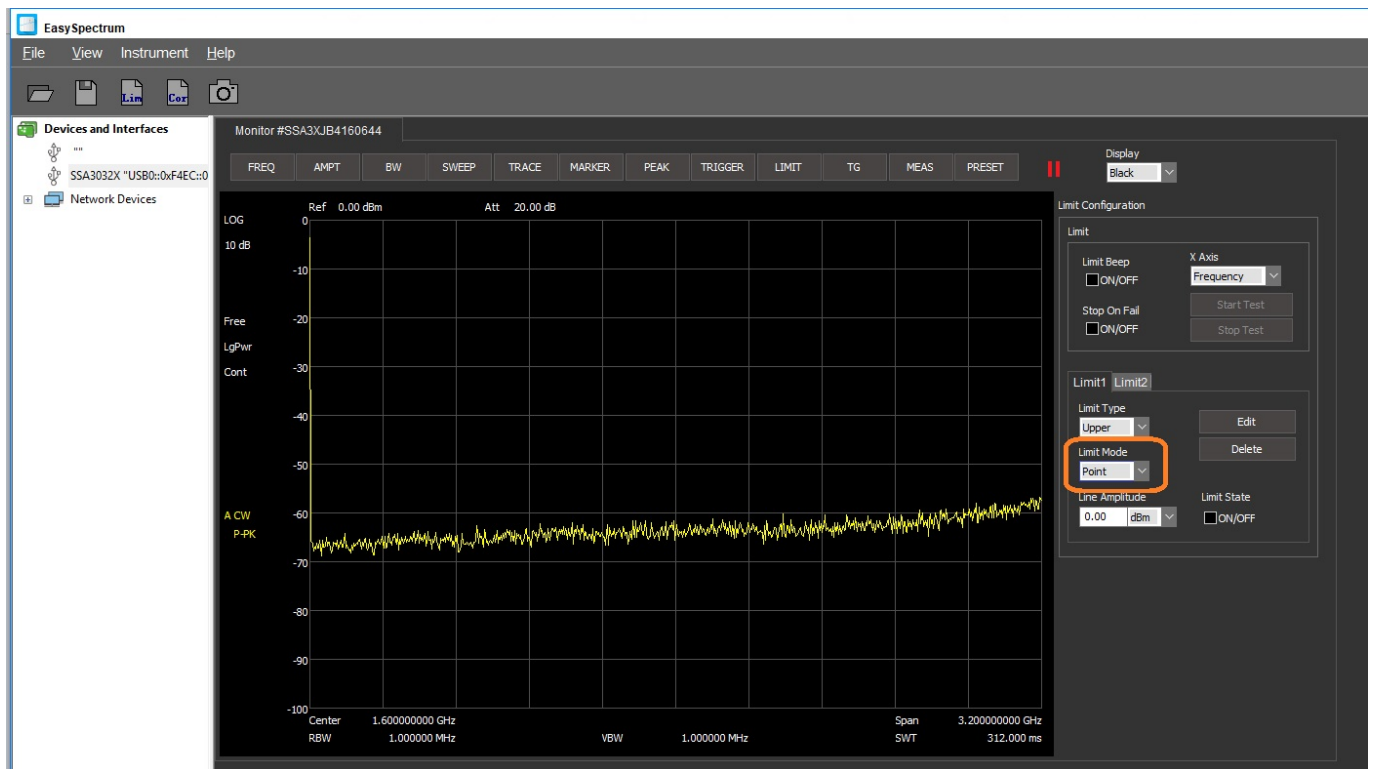
December 18, 2018

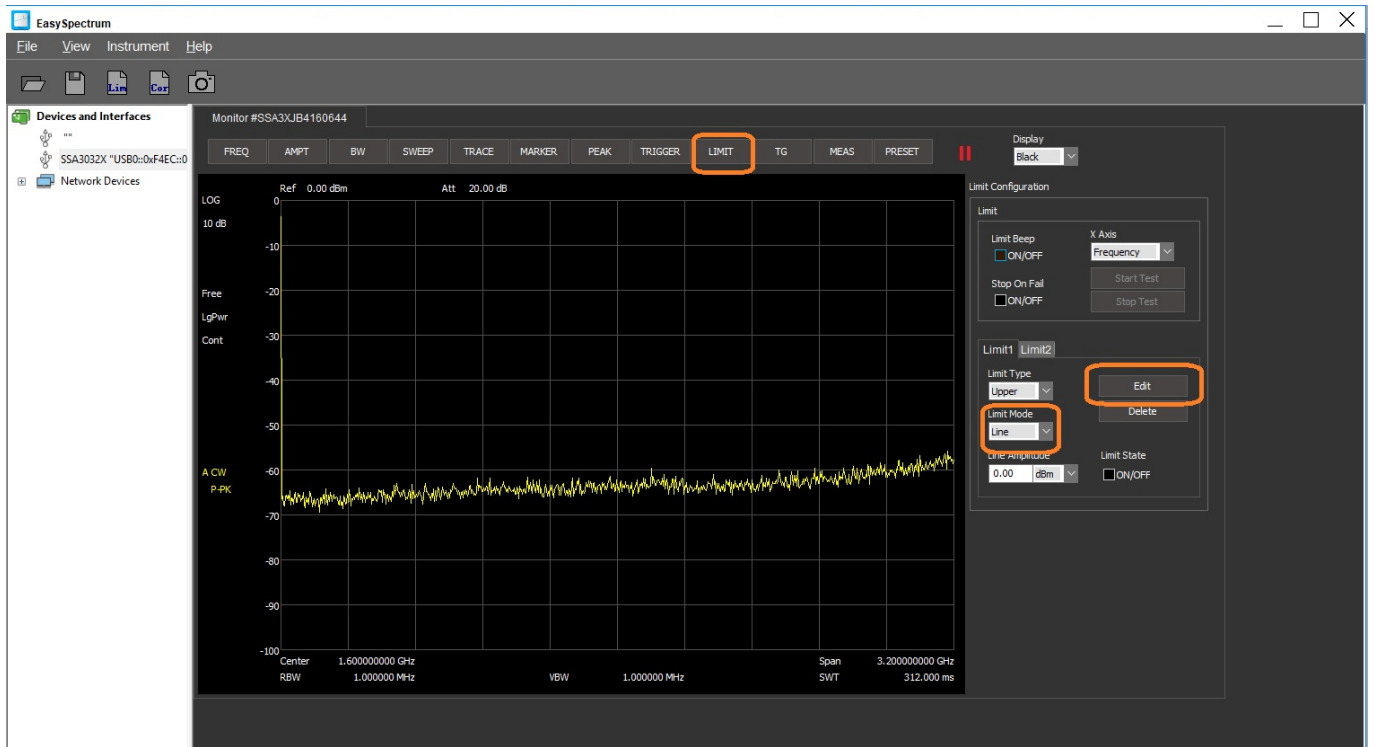
This operating tip describes how to activate two limits using Monitor mode in SIGLENT's EasySpectrum software:

Open monitor mode by right-clicking on the instrument you wish to control:



Select Limit, Set the Type to Point, and then Edit:





Now, change the units and configure the points.. pressing Add to add them to the list:

Ref 0.00 dBm Att 20.00 dB

Limit Edit

Load Limit

Edit Limit

Frequency(Hz) 1.6G

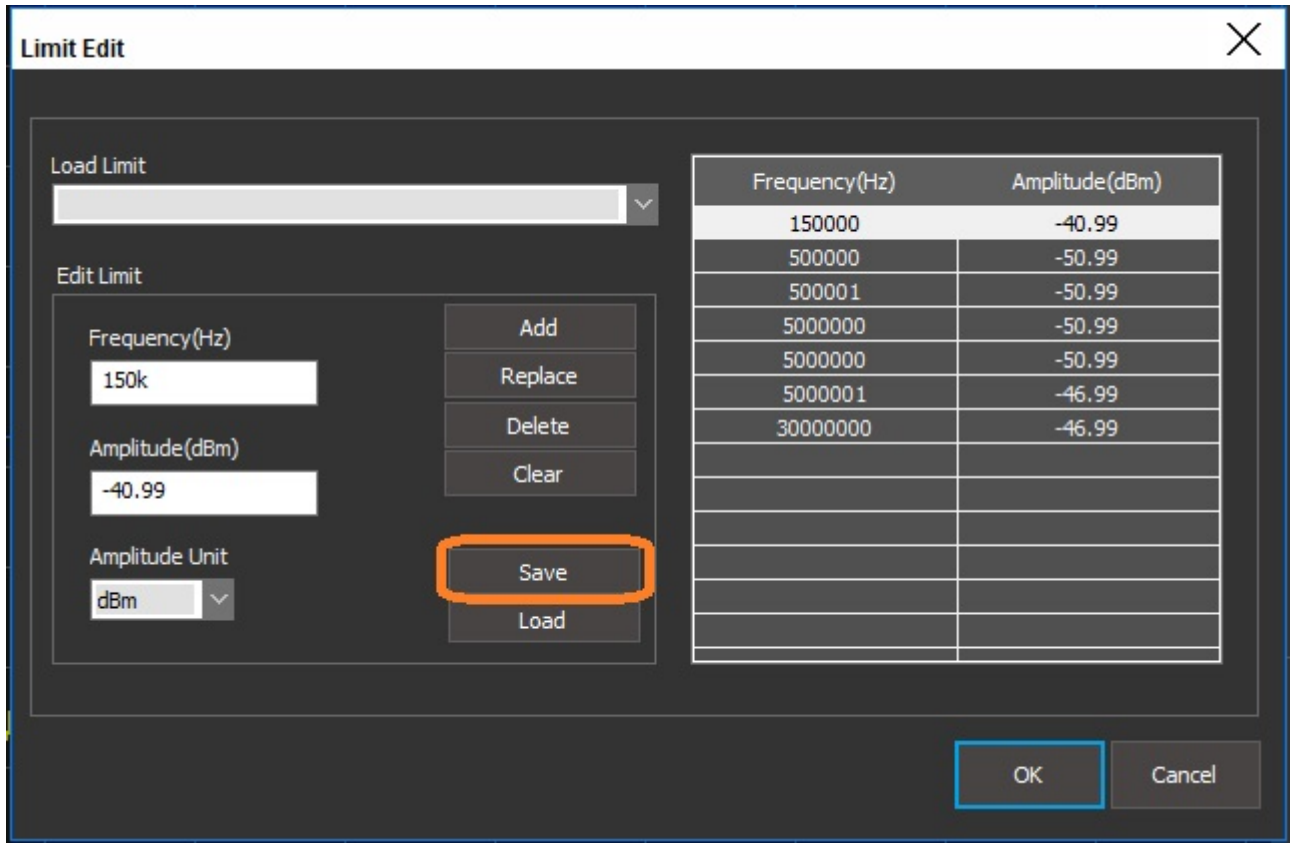
Amplitude(dBm) 0.00

Amplitude Unit dBm

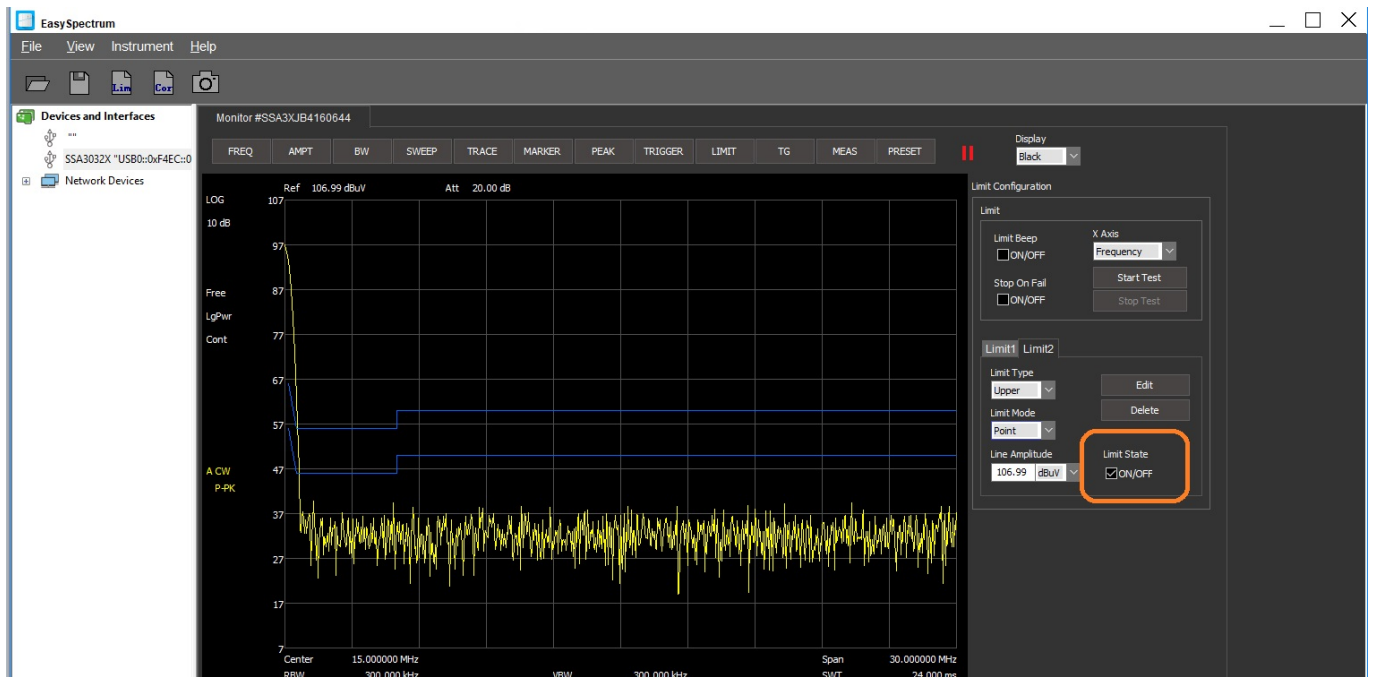
Frequency(Hz)	Amplitude(dBm)
1600000000	0.00

Buttons: Add, Replace, Delete, Clear, Save, Load, OK, Cancel

Now, save the file...



Now, you can activate the limit by selecting the "Limit State" to ON...



You can load a saved limit, edit, and save as a new file to build new limits.

Then load it for Limit2 and activate both lines.



North American Headquarters

SIGLENT Technologies America, Inc
6557 Cochran Rd Solon, Ohio 44139

Tel: 440-398-5800

Toll Free: 877-515-5551

Fax: 440-399-1211

info@siglent.com

www.siglentamerica.com/

European Sales Offices

SIGLENT TECHNOLOGIES EUROPE GmbH

Staetzlinger Str. 70

86165 Augsburg, Germany

Tel: +49(0)-821-666 0 111 0

Fax: +49(0)-821-666 0 111 22

info-eu@siglent.com

www.siglenteu.com

Asian Headquarters

SIGLENT TECHNOLOGIES CO., LTD.

Blog No.4 & No.5, Antongda Industrial Zone,

3rd Liuxian Road, Bao'an District,

Shenzhen, 518101, China.

Tel: + 86 755 3661 5186

Fax: + 86 755 3359 1582

sales@siglent.com

www.siglent.com/ens